



Shimane University

# Quarterly News

for International exchanges

March, 2015  
Vol.8

Shimane University the Center for International Exchanges  
1060 Nishikawatsu, Matsue Shimane Japan 690-8504  
TEL +81-(0)852-32-9756 FAX +81-(0)852-32-6481



## Preface

**Yasunori Ando**



Director of the Center for International Exchanges,  
Shimane University

I would first like to express my sincere gratitude for your continuing cooperation with Shimane University.

I am very pleased to be able to send Eighth Quarterly News of Shimane University's International Exchanges to concerned people, aiming at further promotion of Information Exchange with the returned international students from Shimane University.

There is an announcement from me. Honestly speaking, I would like to tell you that I am moving to President of Okinawa National College of Technology in the southern part of Japan since April of 2015. We have

already selected my successors among the many applicants. So, I think they will make the addresses as new Director and Professors next month.

When I look back, I have been very happy to make the exciting and rewarding businesses, and have a lot of good memories with you since 2007.

Next time, I would like to produce the new relationship with you and your institute from my different standing point.

I have nothing but best wishes for you. I am looking forward to seeing you again in the near future!

Thank you again so much for your kindness and cooperation all this time!

---

## Contents

- 1 Shimane University International Exchange Topics
- 2 Information of Postdoctoral Fellowship Programs
- 3 Message from a staff of the Center for International Exchanges
- 4 Introduction of a Partner University
- 5 San'in Snapshots

## 1: Shimane University International Exchange Topics

Shimane University's recent international events are as follows.

### ◆ The Steering Committee of the Alumni Association of Shimane University



We held the Steering Committee with the representatives of Shimane University's alumni associations, at Matsue campus on March 6th, 2015. The purpose of the Committee is to promote the relationship between Shimane University and those who are playing active part in academic fields in foreign countries. That was also set to develop the supporting foreign students' advanced education and employment in Shimane Prefecture.

There were four guest attendees, namely Ms. Lu Hongyan; Director of Nursing Service Department at Ningxia Medical University (China), Ms. Zhang Xiaomeng; Professor of the

School of Economics and Management at Ningxia University (China), Dr. Hermansah; Professor of the Faculty of Agriculture at Andalas University (Indonesia), Dr. Jaya Kumar Gurung; Executive Director at Nepal Development Research Institute (Nepal), and from Shimane University, President Kobayashi, Shotai, Dr. Ando, Yasunori; Director at the Center for International Exchanges, Mr. Ota, Toshiyuki; Project Instructor at the Center.

### ◆ The steering committee of strategic project with Universities and Japanese schools in foreign countries tied up (March 16, 2015)



We held the conference with the delegates of those educational institutions who have cooperative agreement with Shimane University, for the purpose of promotion of advanced education and employment of foreign students in Shimane Prefecture on February 27th, 2015.

Attendees are as follows, namely Mr. Nguyen Duc Hoe; Principal at Dong Du Japanese Language School (Vietnam), Ms. Imelda Indah Lestari; Chief of the Department of Japanese at Andalas University (Indonesia), Mr. Liu Dan; Chief of Exchange Section at Northeast Normal University (China), Mr. Yanagihara, Daisaku; Principal of Hanamaru Japanese School (Thailand), and from Shimane University, President Kobayashi, Shotai, Dr. Takeuchi; Vice President, Dr.

Ando, Yasunori; Director of the Center for International Exchanges, Mr. Ota, Toshiyuki; Project Instructor at the Center, and Dr. Sugie, Jitsuro; Professor of Interdisciplinary Faculty of Science and Engineering.

Previous to the proceedings President Kobayashi gave an address that we intend to make full use of "Fund for Supporting the Internship at Shimane Prefecture companies for Foreign Students" raised in 2014 with support from local companies, in order to give positive assist to foreign students to get a job in Shimane Prefecture.

### ◆ Academic Cooperation Agreement between Kainan University in Taiwan and Shimane University, and between the Center for Optoelectronic Medicine in National Taiwan University(NWT) and Raman Project Center for medical and biological applications in Shimane University (February 23rd, 2015)



For the purpose of participating in signing ceremonies with two universities of Taiwan and official meeting with Mayor of Taipei city, President Shotai Kobayashi and Prof. Yasunori Ando, Director of International Exchanges and Prof. Tasuyuki Yamamoto, Director of Raman Project Center for Medical and Biological Applications in Shimane University. The signing ceremony for Academic Cooperation Agreement between Kainan University in Taiwan and Shimane University was conducted at Kainan University on

February 12th 2015. President Shotai Kobayashi of Shimane University and President Chin-Yen Lin of Kainan University signed the Agreement and pledged reinforced cooperation.

In the afternoon of same day, Director Tatsuyuki Yamamoto of Raman Project Center for medical and biological applications in Shimane University and Director Wen-Yih Isaac Tseng signed MOU for Scholarly Exchange and Collaboration to extend the academic cooperation in the presence of President Pan-Chyr Yang of NWT and President Shotai Kobayashi of Shimane University.

#### ◆Shimadai International Party for Foreign and Japanese students 2014 was held (December 18, 2014)



December 13, 2014, Shimane University had convened the Seventh international Party for the purpose of enhancing mutual understanding and International Exchanges among international students, Japanese students and concerned people. With the support of approx. 200 participants, the party was successfully held.

▶▶▶For full articles and details, please visit our website... <http://kokusai.shimane-u.ac.jp/english/>

## 2: Information of Postdoctoral Fellowship Programs



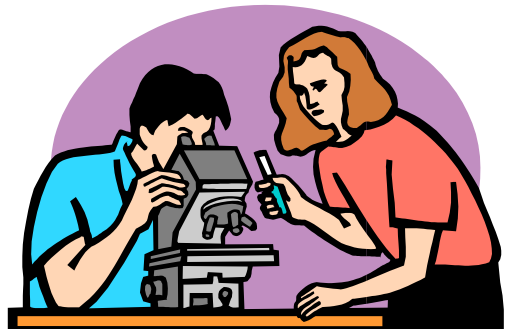
### *Japan Society for the Promotion of Science*

#### ▶ Postdoctoral Fellowship Program for Foreign Researchers 2015, 2nd Recruitment

**Shimane University's DEAD LINE ⇒ April 20th (Mon), 2015**

**Outline:** The fellowship's purpose is to provide opportunities for young postdoctoral researchers from other countries to conduct, under the guidance of their hosts, cooperative research with leading research groups in universities and other Japanese institutions. The program allows such researchers to advance their own research while contributing to the progress of research in Japan and the counterpart countries.

Applications for this program must be submitted to JSPS by a host researcher in Japan through the head of his/her university or institution. They should make this contact well in advance of the host institution's application deadline.



#### **Fellow Eligibility:**

1. Be a citizen of a country that has diplomatic relations with Japan.  
(JSPS treats Taiwanese and Palestinian researchers in this manner.)
2. Hold a doctorate degree when the Fellowship goes into effect, which must have been received on or after April 2, 2009, or be scheduled to receive a doctorate degree before the Fellowship goes into effect.

#### **Duration and Commencement of Fellowships:**

1. Fellowships are awarded for a period of 12 to 24 months.
2. Successful candidates must start the Fellowship in Japan from September 1, 2015 to November 30, 2015.

#### **Terms of Award:**

1. A round-trip air ticket (based on JSPS regulations)
2. A monthly maintenance allowance of ¥362,000
3. A settling-in allowance of ¥200,000, Overseas travel accident and sickness insurance coverage, etc.

▶▶▶For more information, <http://www.jsp.go.jp/english/e-fellow/postdoctoral.html>

► **Invitation Fellowship Programs for Research in Japan 2015 (Short-term, Short-term S),  
2nd Recruitment**

**Shimane University's DEAD LINE ⇒ April 20th (Mon), 2015**

**Outline:** JSPS carries out fellowship programs that allow researchers in Japan to invite overseas researchers to Japan. Based on a submitted visit plan, fellowships are awarded in the categories and for the purposes listed in the table below. Applications for this program must be submitted to JSPS by a host researcher in Japan through the head of his/her university or institution.

**Short-term**

**Purposes:**

Invite overseas researchers with excellent records of research achievements for short-term visits for the purpose of contributing to the advancement of research in related fields through discussions, opinion exchanges, lectures and other means.

**Eligibility :**

Overseas researchers with an excellent record of research achievements.

**Duration and Commencement of Fellowships:**

1. Fellowship tenure must be at least 14 days; up to 60 days.
2. Successful candidates must start the Fellowship in Japan from October 1, 2015 to March 31, 2016.

**Terms of Award:**

1. Supply international air tickets (based on JSPS's regulations)
2. A monthly maintenance allowance of ¥18,000 per day
3. Domestic Research Trip Allowance ( ¥150,000 )
4. Overseas travel accident and sickness insurance

**Short-term S**

**Purposes:**

Invite overseas researchers with eminent records of research achievements to Japan for purposes corresponding to those records. They offer advice and cooperate in research activities throughout the host institution and give lectures or conduct other activities at other research institutions, thereby elevating the international appraisal of the standard of research conducted in Japanese universities and other institutions and contributing to the advancement of scientific research in Japan.

**Eligibility :**

Overseas researchers who are Nobel laureates or recipients of similarly high-level international prizes with exceptionally outstanding records of research achievements and who currently occupy a leading position in their subject field.

**Duration and Commencement of Fellowships:**

1. Fellowship tenure must be at least 7 days; up to 30 days
2. Successful candidates must start the Fellowship in Japan from October 1, 2015 to March 31, 2016.

**Terms of Award:**

1. Supply international business-class air tickets (based on JSPS's regulations)
2. A monthly maintenance allowance of ¥42,000 per day
3. Domestic Research Trip Allowance ( ¥150,000 )
4. Overseas travel accident and sickness insurance



►►► For more information, <http://www.jsp.go.jp/english/e-inv/how.html>

### 3: Message from a Current International Student



#### Benjaporn Kurusvat

Thailand

Faculty of Education

This is my first time to study abroad. I felt so excited to get a scholarship from the embassy of Japan. This is a great chance for me to get a lot of experiences that I have never had before. I chose Shimane University because I wanted to study Japanese culture and Japanese language together. Matsue city is a great place with beautiful scenery. When I started my study I had to adjust my life to many new things here, But I can always get good advice from everyone: such as staff when I need some help about my life, teachers when I don't understand the lesson and need some tips to improve and understand better, and people in Shimane when I need help from them. In term of friends, I have a lot of friends from many countries. I learn a lot about their cultures, and we exchange many stories from our experiences. Sometime we help each other learn Japanese language. That's so good because I learn new ways to understand, more than just what I get from from my class. I like the program for international students; it has field trips to learn about Japanese culture. I go on a lot of trips. That makes me feel good, to see many things through Japanese's eyes. Shimane is a place of cultural ritual, and I learn more and more every day. This journey opens my eyes to new perspectives. I enjoy my life and I think this is a great opportunity to study here

### 4: Introduction of a Partner University

#### File No.7.

#### Semey State Medical University (Kazakhstan)

Semey State Medical University and Shimane University concluded academic and student exchange agreements in 2013.

Semey State Medical University aims improvement in medical technology for victims of radiation sickness, caused by repeated nuclear test in former Soviet Union era, by exchanging doctors with Medical department of Shimane University. It is also beneficial for Shimane University to prepare for emergency as we are very close to the nuclear power plant which is in Matsue city.

Based on our conclusion, we are exchanging doctors, researchers and students for our mutual development in the medical fields.



L o c a t i o n	Kazakhstan, Semey city
E s t a b l i s h e d	1953
T y p e	State University
S t u d e n t s	2984
U R L	<a href="http://www.sgma.kz/en">http://www.sgma.kz/en</a>

## 5: San'in Snapshots

### 小泉八雲 旧居 ; Koizumi, Yakumo - Kyuukyo (former residence)

In a few minutes' walk from Matsue Castle, there is the former residence of Koizumi, Yakumo (Lafcadio Hearn). He was a folklorist of Japan, literary scholar and novelist who left several works full of deep observation of Japanese culture, particularly of people's custom, nature of spirit in Matsue. His statements will profoundly present you what they were like in Matsue of those days, of which some part still remains.

He was born in Greek in 1850 and married a woman of Matsue when he was a teacher of English at Matsue High School (present Matsue Kita High School) and Shimane-ken Normal School (present Shimane University).

He loved Matsue, and also enjoyed the appearance and atmosphere of the garden of his house. The museum with his name also stands beside it.

You can see there what he once saw or some tools he used there to share the old Matsue with Hearn.



### 玉造温泉 ; Tamatsukuri - Onsen (hot spring)

We have quite a few hot springs in Japan and also in Shimane. It is about ten minutes by train from Matsue Japan Railroad station to arrive at Tamatsukuri - Onsen. This hot spring is so historical as to be noted in Izumo no Kuni - Hudoki (description of culture in the Izumo District, written in 733.)

We, however, would like to feature here the beautiful scenery of cherry blossoms along the Tamayu River, which runs in the middle of the town into the Shinji Lake.

In April, just try walking in the streets under the cherry trees and it will offer you the bright, but calm aura with careless grace.

Have a good study and enjoy staying in Shimane.



---

## For Inquiries or Information

**Shimane University the Center for International Exchanges**

1060 Nishikawatsu, Matsue Shimane Japan 690-8504

TEL: +81-(0)852-32-9756 FAX: +81-(0)852-32-6481

Email: [international@office.shimane-u.ac.jp](mailto:international@office.shimane-u.ac.jp)

URL: <http://kokusai.shimane-u.ac.jp/>